

FOR PROPER RESULTS!



Technical Specification

OPTISCAN-TP

Classification according to EUROP



► objektive ► intelligent ► dependable ► mobile

1. General info

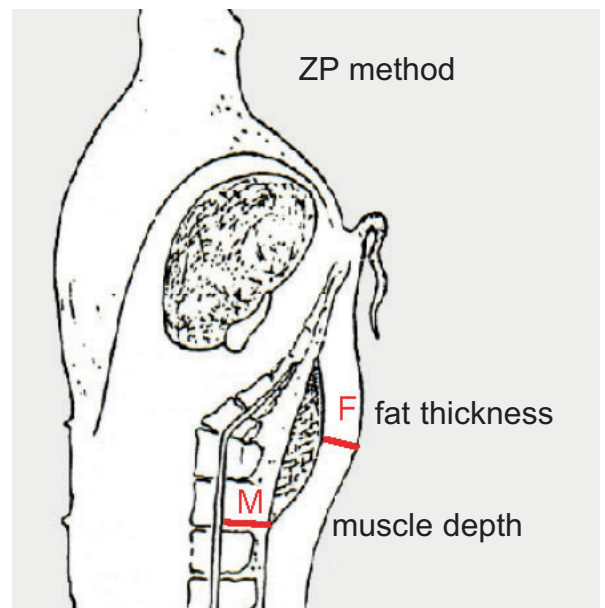
The OptiScan-TP, combined with our optical evaluation for classification of pigs (EUROP) for the two point method, allows fantastically easy classification and servicing thanks to a perfect solution of hardware and unlimited data communication.

The base for the calculation of the share of muscle meat is the bacon value (F) and the meat value (M). Both values are optically acquired and evaluated on carcasses.

With these values and an uniform calculation formula the respective share of muscle meat percentage is calculated (MF%).

Option:

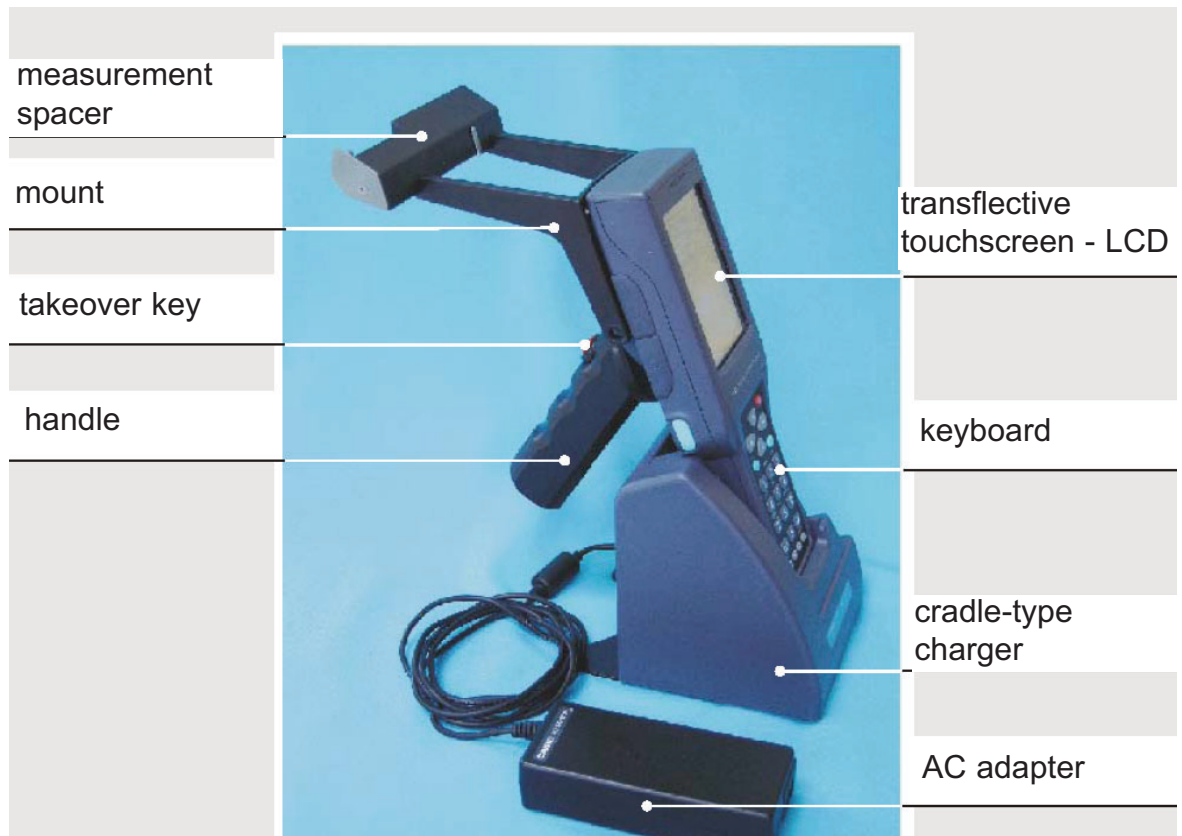
The combination of OptiScan-TP and pH-probe defines at the same time the quality of the pig.



Technical Specification OptiScan - TP

2. Device overview

(Description of components)



Ergonomical excellence

The OptiScan-TP by its weight of only ca. 750g is amiably light. The design is an example of a classical industry terminal and connects a touch sensitive display with a narrow ergonomical form of its casing. The operator using the extra handle can at the same time hold the OptiScan-TP and with the other hand place the carcass.



Technical Specification OptiScan-TP

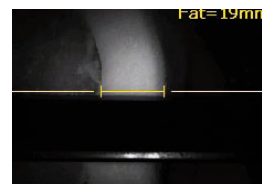
3,5" Super-LCD

The 3.5" Super-LCD shows perfect display quality. The quality composes excellence sharpness, colour fidelity, speediness and long-livedness. The transreflective display of the OptiScan-TP is particularly scratch- & splash proof and consists of high-grade specialized plastic, which is easy to read in darkness and in bright sunshine. The economical power management enables low power consumption and long operational time especially with intensive work on the display.



Integrated digital imager

The integrated digital imager of the OptiScan-TP takes an illuminated photo of the two measurement points on the carcass. The images are the base for the calculation of lengths of bacon value and the meat value. The photos are saved and later can be controlled.



Integrated Bluetooth®

For the integration of modern data transfer in high-performance industrial applications, Bluetooth® offers innumerable possibilities: beginning with transfer of data to the mobile or immobile printer up to data transfer between OptiScan-TP and PC based applications. The integrated Bluetooth® interface permits plentiful Plug-and-Play solutions.



Splashproof to IP 64

The OptiScan-TP is absolutely guaranteed for reliability and longevity. The devices hold on every weekday in difficult conditions. The OptiScan-TP is dust- and splash proof to IP 64. Thus the OptiScan-TP easily meets the demands of industrial conditions.



Technical Specification OptiScan-TP

Technical data

CPU	Operating System	300 MHz
Operating System	Windows® CE®.Net 4.1	
Standard Software	Internet Explorer 5.5 Mail, LM WIN, ActiveSync	
Memory	RAM	32 MB
Display	Super LCD:	Transflective 16-bit TFT colour touch display
	Size:	3,5 inch
	Pixel:	240 x 320 dots
	Font Size:	scalable
	Back light:	yes
	Status LED:	yes
Scanner	Device:	C-MOS scanner
	Angle:	45°
	Image data capture:	yes
	Readable bar codes:	1D, 2D, OCR
Key pad	25 keys incl. function and trigger keys	
Interface	Infrared:	IrDA version 1.0
	IrDA version 1.0	
	Bluetooth ®	Version 1.1.
Power	Battery:	3.400 mAh
Environment	Protection:	IP 64
	Operating temperature:	-20°C to +50°C
Dimensions	L x W x H	220 x 77 x 47 mm
Weight		approx. 750g

All product- or company names are either trademarks or registered trademarks of the respective owners. This publication carries product description without obligation and is not to be seen as a firm offer. Specifications and design are subject to change without notice